

THURS – SAT
SEPTEMBER 8 – 10

Marcus Whitman Hotel
Walla Walla, WA



RESERVE YOUR ROOM TODAY!

Call 866-826-9422 and mention ACEC when making your reservation. Our room block will be held until **August 8, 2016**. After that time we cannot guarantee a room at the Marcus Whitman Hotel.

Room rates: \$139 - \$199 per night
(plus 10.9% taxes and fees).

[ACEC Oregon + Washington Fall Conference](#)

Conference Highlights

- “Building a Better Brain: Improving Decision Making” with Brad Hermanson
- Client presentations from Port of Portland, Port of Walla Walla, Army Corps of Engineers, and more
- Roundtable discussions moderated by industry experts on topics including healthcare, HR, insurance, legal, and more
- Networking with key industry professionals
- Social events including a Winemaker's Dinner, optional golf and wine tasting tour, plus Walla Walla's Wheelin' Weekend

[Click here for preliminary agenda.](#)

REGISTRATION FEES

SAVE \$\$! Register by August 8, 2016

- \$550 for members who register by August 8
- \$650 for members after August 8
- \$650/\$750 for non-members
- Discounted prices for Future Leaders! Only \$400 by August 8

Interested in becoming a sponsor or exhibitor? [Read more here.](#)

REGISTER NOW

THURS
JULY 28

ACEC/SW WA Public Agency Liaison Committee meeting

Join representatives from various southwest Washington public agencies and

WHEN

10:30 A.M. to 12:00 NOON
(includes 30 mins. for Q&A)

WHERE

Washington State Department
of Transportation
11018 NE 51st Circle
Vancouver, WA 98682

No charge to attend!

Please click on the [registration link](#)
to RSVP, either “Member Registration”
or “Public Registration” so we know
how many to expect.

Good for one (1) continuing
professional development credit.

THANK YOU SPONSOR!



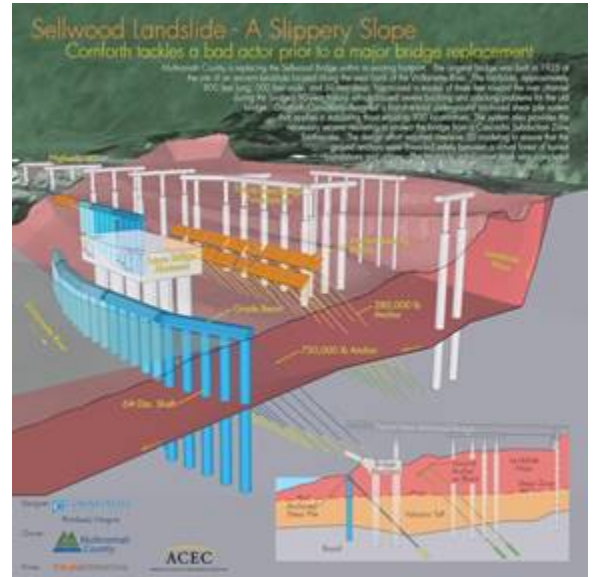
ACEC members and guests for their quarterly meeting.

PRESENTATION

Landslide Mitigation using Anchored Shear Piles

Tom Westover, PE, Associate Engineer, Cornforth Consultants, Inc.

Multnomah County, Oregon is replacing the Sellwood Bridge within its existing footprint. The original bridge was built in 1925 at the site of an ancient landslide located along the west bank of the Willamette River. The landslide, approximately 800 feet long, 500 feet wide, and 50 feet deep, has moved in excess of three feet toward the river channel during the bridge’s 90-year history, which caused severe buckling and cracking of the old bridge deck and abutment piers. The landslide movement was mitigated using an anchored shear pile (ASP) system. Structural mitigation of landslides is increasingly necessary where existing geologic hazards intersect with displacement-sensitive infrastructure. Anchored shear piles (ASP) can be used to develop full-depth restraint of large landslide masses with limited post-construction deformation. This presentation highlights a case study for landslide mitigation through the use of high-capacity ground anchors integral with cast-in-place concrete shear piles. Construction of an ASP system can provide full-depth resisting force to a landslide, without the risk and right-of-way impacts of large open-cut excavations.



PUBLIC AGENCY UPDATE

The City of Kelso’s Procedures for Procurement of Engineering Services
Tim Shell, P.E., Senior Engineer, City of Kelso

[Click here for more information and to RSVP.](#)

UPCOMING

- July 19 – [ACEC Oregon/USACE Liaison Committee](#) meeting
- Aug 11 – [8th Annual LDG BBQ @ Skyline Tavern](#)
- Sept 19-22 – [Mysteries of the FAR Revealed: Using the AASHTO Audit Guide, Portland](#)

ACEC Washington Upcoming Events – ACEC Oregon members receive the member rate!

- August 22 – Golf tournament, Mill Creek Country Club
-

COURTESY ANNOUNCEMENTS

- July 20 – SMPS Oregon Golf Tournament
 - July 25-29 – Comprehensive Bikeway Design 2.0 workshop, PSU
 - August 20 – Kickball Without Borders 2016 presented by Engineers Without Borders Portland Chapter
-

Comments? Questions? Please e-mail mwebber@acecOregon.org or adavis@acecOregon.org.

AMERICAN COUNCIL OF ENGINEERING COMPANIES OF OREGON

Serving the business needs of engineering and surveying companies in Oregon and southwest Washington since 1956.

5319 SW Westgate Drive, Suite 224, Portland, OR 97221

phone 503.292.2348 / fax 503.292.2410

www.acecOregon.org

Member of the American Council of Engineering Companies, Washington, D.C. ~ www.acec.org

Upcoming events: http://www.acecoregon.org/calendar_list.asp.

ACEC Oregon is 115 member firms strong representing more than 3,500 employees!

Check out our online directory at http://www.acecoregon.org/AF_MemberDirectory.asp.



[Follow ACEC Oregon on Facebook!](#)

If you do not wish to receive emails from ACEC OR, please reply to this email to be removed from our email list.

Questions about this email can be sent to mwebber@acecOregon.org. This notice is provided to further the purposes of the federal CAN-SPAM Act of 2003.