

# ACEC Oregon

AMERICAN COUNCIL OF ENGINEERING COMPANIES  
OF OREGON

Representing engineering and land surveying  
companies in Oregon and southwest Washington  
since 1956.

## MARCH 2013

# UPDATE

## INSIDE THIS ISSUE

- **Grand Awards**  
page 2
- **What is Engineering Excellence?**  
page 3
- **Honor Awards**  
**People's Choice Award**  
**Thank you, Dinner Sponsors**  
page 4

## LINKS TO MORE ENGINEERING EXCELLENCE INFO

- **Slideshow of all the 2013 entries**  
(featuring each project's photographic  
display panel)
- **Past award winners**  
[http://www.acecoregon.org/  
engineeringExcellence.php](http://www.acecoregon.org/engineeringExcellence.php)

**Alison Davis**  
Executive Director  
[adavis@acecOregon.org](mailto:adavis@acecOregon.org)

**Merideth Webber**  
Executive Assistant  
[mwebber@acecOregon.org](mailto:mwebber@acecOregon.org)

**Patrick Kelly**  
Administrative Assistant  
[pkelly@acecOregon.org](mailto:pkelly@acecOregon.org)

[www.acecOregon.org](http://www.acecOregon.org)

Member of the  
American Council of Engineering Companies  
Washington, D.C.



# Engineering Excellence Awards 2013

## PAE wins "Project of the Year" for Bud Clark Commons

The Bud Clark Commons is an example to the community and the nation of a transformative place that serves homeless and low income individuals with dignity. In addition, the center provides quality affordable housing, is environmentally and economically sustainable, enhances neighborhood livability, invites public participation, and creates an inspirational space. This 108,000 square-foot building for Home Forward provides a range of services designed to treat the causes of homelessness, not just the symptoms.

The Commons exemplifies how engineering ingenuity and a truly integrated design team can create a landmark of sustainable design that also benefits the community. Its unique holistic services program provides not just housing, but services necessary to eliminating homelessness.

PAE provided mechanical, electrical, lighting, telecommunications, and security system design, as well as energy modeling for the building. The LEED Platinum building features a range of highly efficient systems, including graywater reclamation and solar hot water heating systems.

A heat recovery system for residential units and customized windows further enhance energy savings, while the building's HVAC system provides tuberculosis control with displacement ventilation, UV filtration, and double the typical air change rate for shelter sleeping rooms. The building's highly sustainable systems consume 45 percent less energy and 50 percent less water than required by



**PROJECT OF THE YEAR** PAE, Bud Clark Commons for Home Forward  
Pictured from left are: **Jeff Becksfort** and **Mike Streb**, PAE; **Julie Livingston**, Home Forward; and **Paul Schwer**, PAE.

---

---

**This project is a terrific example for cities around the world and the entire team should be commended for their contributions to our community with this project."**

---

---

--Judge's comment

Oregon's codes, saving about \$60,000 annually which translates directly into additional funds for services.



# Engineering Excellence Awards 2013 *(continued from page 1)*

## Six EEA projects receive Grand Awards from a field of 32 entries

**GRAND AWARD CH2M HILL, INC., U.S. Congresswoman Darlene Hooley Pedestrian Bridge at Gibbs Street for City of Portland**  
 Pictured from left are: **Dale Wilson** and **Billy Adams, CH2M HILL**; **Sam Hunaidi, ODOT**; **Bonnie Scheeland** and **Gary Conner CH2M HILL**; **Jody Yates, City of Portland**; **Bernd Mauelshagen, CH2M HILL**; and **Greg Jones, City of Portland**.



photos by Julie Keefe

**GRAND AWARD KITTELSON & ASSOCIATES, INC. and OBEC CONSULTING ENGINEERS OR 213/I-205 to Redland Road Crossing for City of Oregon City** Pictured below from left to right are: **Sam Hunaidi, Oregon Department of Transportation**; **Robert Goodrich, OBEC Consulting Engineers**; **John Lewis** and **Aleta Froman-Goodrich, City of Oregon City**; **Nancy Kraushaar, City of Wilsonville**; **Hermanus Steyn, Kittelson & Associates, Inc.**; **Guy Hakanson** and **Jason Kelly, OBEC Consulting Engineers**; and **Charles Radosta, Kittelson & Associates, Inc.**



**GRAND AWARD OBEC CONSULTING ENGINEERS Chambers Covered Bridge Rehabilitation for City of Cottage Grove**  
 Pictured from left: **Guy Hakanson** and **Tony LaMorticella, OBEC**; **Richard Meyers, City Manager of Cottage Grove**; **Mike Hawkins, OBEC**; **Tom Deines, Wildish Construction**; **Stewart McCornack, Greg Ausland** and **Brad Larsen, OBEC**.







**GRAND AWARD PAE**  
**Chemeketa Community College Health Science Complex** Pictured from left are: **Bjorn Clouten, SRG Partnership; Nick Collins, PAE; Jon Wiener, SRG Partnership; Zachary Suchara, Luma Lighting Design; and Nedzib Biberic, PAE.**

**GRAND AWARD PARAMETRIX**  
**State Highway 99W: Newberg and Dundee Bypass for Oregon Department of Transportation (ODOT)** Pictured from left are: **Bill Ciz, Parametrix; and Kelly Amador and Tim Potter, Oregon Department of Transportation.**



**WHAT IS ENGINEERING EXCELLENCE?**  
 The Engineering Excellence Awards (EEA) is an annual design competition that recognizes engineering achievements which demonstrate the highest degree of merit and ingenuity.

A panel of judges selected the best engineering projects of the year based on criteria such as original or innovative application of new or existing design techniques; social, economic and sustainable design considerations; and complexity.

Recognition is given at three levels: Honor Awards, Grand Awards & Project of the Year.



**GRAND AWARD URS CORPORATION**  
**Portland Streetcar Loop Project for City of Portland Bureau of Transportation** Pictured from left are: **Tim Martin, URS; Dana Beckwith, DKS Associates; Ruth Cullen, Katharine Brendle, John Lostra and Mark Dorn, URS; and Peter Coffey, DKS Associates.**

# HONOR AWARDS

## BergerABAM

Architectural Digester: Gresham Waste Water Treatment Plant Administration Building Reuse for City of Gresham

## BergerABAM, West Yost Associates and Jacobs Associates

Outfall 27 / Sellwood CSO Control for City of Portland Bureau of Environmental Services

## Cornforth Consultants, Inc. (Landslide Technology division)

Managing Landslides in West Africa for Marathon Equatorial Guinea Production Limited

## David Evans and Associates, Inc.

- I-205 Railroad Avenue (99E Dunes Drive to 10th Street) for City of Oregon City
- Rock Creek Trail Extension for City of Hillsboro

## DKS Associates

Portland South Auditorium District Lighting for City of Portland Bureau of Transportation

## GeoEngineers, Inc.

- Terminal 6 - Berths 604/605 Modernization for Port of Portland
- Walla Walla River Habitat Restoration for Confederated Tribes of the Umatilla Indian Reservation

## GHD Inc.

Malheur National Wildlife Refuge Fish Screening & Passage Projects for U.S. Fish & Wildlife Service, Region 1

## Harper Houf Peterson Righellis, Inc.

Trolley Trail for North Clackamas Parks & Recreation District

## HDR Engineering

Wyeth Fishing Treaty Access Site Bridge for U.S. Army Corps of Engineers Portland District

## HNTB Corporation and Oregon Bridge Delivery Partners (HDR/Fluor)

I-84: Exit 64 (Hood River) - Bundle 224 for Oregon Department of Transportation

## Keller Associates, Inc.

Comprehensive Sanitary Sewer Master Plan for City of Ashland

## Kennedy/Jenks Consultants

Gearhart Water Treatment and Supply Facilities Project for City of Gearhart

## Kleinfelder

Wastewater Treatment Plant Demolition Action Plan for City of Troutdale, Public Works Dept.

## Otak, Inc. and Hart Crowser

Crystal Creek Pedestrian Suspension Bridge for National Park Service

## Otak, Inc.

- Battle Creek Property Redevelopment for City of Salem Dept. of Public Works
- I-5: Wilsonville Road Interchange for Oregon Dept. of Transportation / City of Wilsonville

## PACE Engineers and Hart Crowser

Chinook Water Supply Restoration for Chinook Water District

## Parametrix, Inc.

- Horn Creek Water Treatment Plant for Pacific City Joint Water-Sanitary Authority
- Roy Creek Culvert Replacement for Tillamook County Public Works Department

## Parsons Brinckerhoff

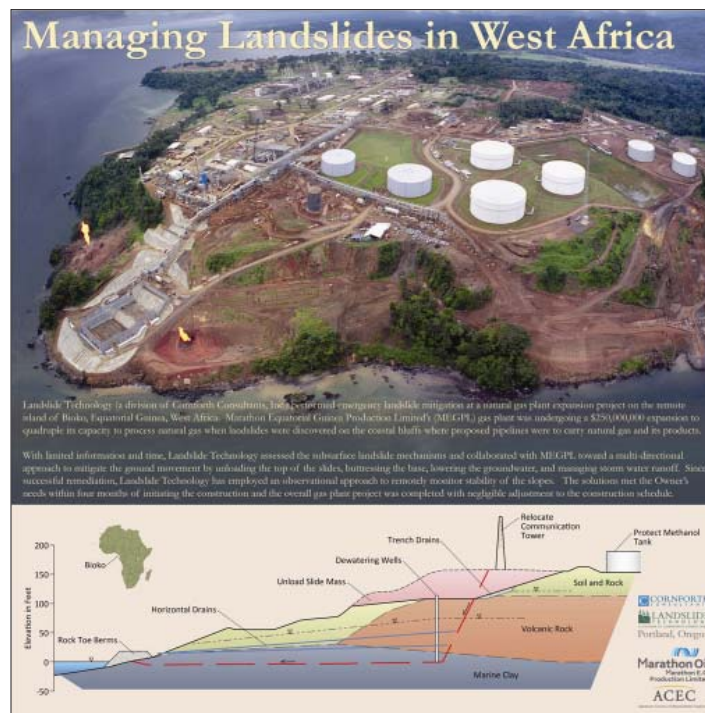
Fourth Plain Transit Improvement Project for C-TRAN

## PBS Engineering + Environmental

Junction City Wetland Mitigation for Oregon Department of Corrections and CH2M HILL

## T.Y. Lin International

- I-5: Elkhead Rd to OR 126: Knowles Creek Design/Build for Oregon Dept. of Transportation
- OR 43: Willamette River Bridge (Oregon City) for Oregon Dept. of Transportation



**PEOPLE'S CHOICE AWARD** Cornforth Consultants, Inc. (Landslide Technology division) Managing Landslides in West Africa for Marathon Equatorial Guinea Production Limited.

## THANK YOU, AWARDS DINNER SPONSORS!

PEOPLE'S CHOICE sponsor  
**Parsons Brinckerhoff**

PATRONS  
**David Evans and Associates**  
**HDR**

GOLD sponsors  
**Cresa**  
**Kittelson & Associates**  
**Stewart Sokol & Gray**

FRIENDS  
**GHD / GRI / Otak**  
**Parametrix**  
**URS**

## ACEC Oregon

SINCE 1956  
5319 SW Westgate Drive, Suite 224,  
Portland, OR 97221  
phone (503) 292-2348 ♦ fax (503) 292-2410  
[www.acecOregon.org](http://www.acecOregon.org)

[Like us on Facebook!](#)

